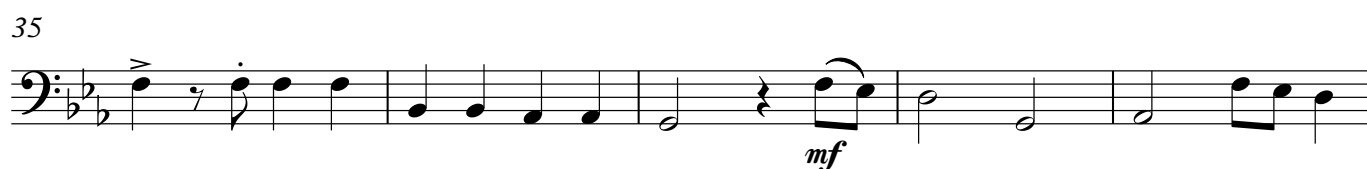
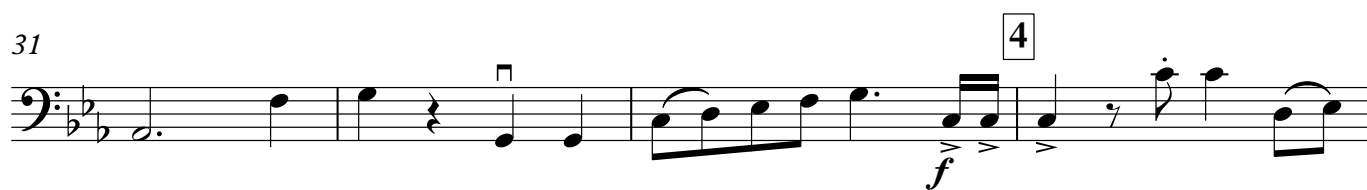
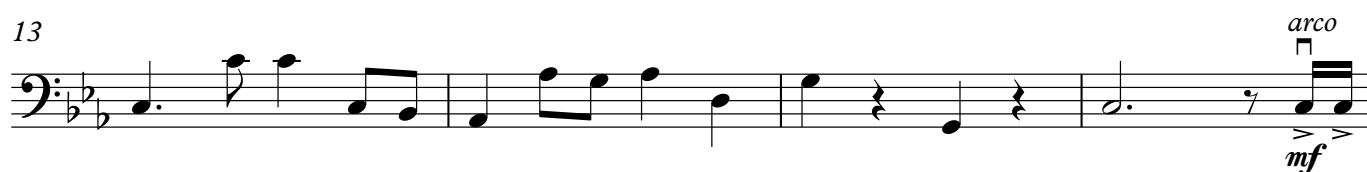


Возвещать о Боге

Контрабас

Allegro

3



2
40

Контрабас

5

The bass line of 'The Rose Tree' is written in 2/4 time on a single staff. It begins with a treble clef and a key signature of one flat (B-flat). The melody consists of the following notes: G2 (quarter), A2 (quarter), B-flat2 (quarter), A2 (quarter), G2 (quarter), F2 (quarter), E2 (quarter), D2 (half). The piece concludes with a double bar line.

44

50

6

8

7

7

8

3

Musical notation for the bass line of 'The Rose Tree'. The key signature is B-flat major (two flats). The melody consists of three measures of whole notes, each with a number above it: 8, 7, and 3. The first measure is a whole note B-flat, the second is a whole note G, and the third is a whole note E-flat. The fourth measure is a whole rest. The fifth measure is a half note G, followed by a half note F, both beamed together. The dynamic marking *mf* is placed below the final note.

69

9

74

2

pizz

[illegible]

79

arco

10

[illegible]

83

Musical notation for Example 6-8, bass clef. The key signature has two flats (B-flat and E-flat). The tempo/mood marking is *mf*. The notation consists of a single staff with various note values and rests.

89

11

[illegible]